

High Displacement Diaphragm Seal

Model DF25

ASME B40.100

Features

- High displacement of diaphragm
- Suitable for instruments with large displacement actuators
- Metal diaphragms with PTFE gasket
- Interchangeable components
- Removable top and bottom housing
- Variety of wetted parts materials

Ranges

15 psi up to 1000 psi
 1 kg/cm² up to 100 bar & kg/cm²
 100 kPa up to 10000 kPa

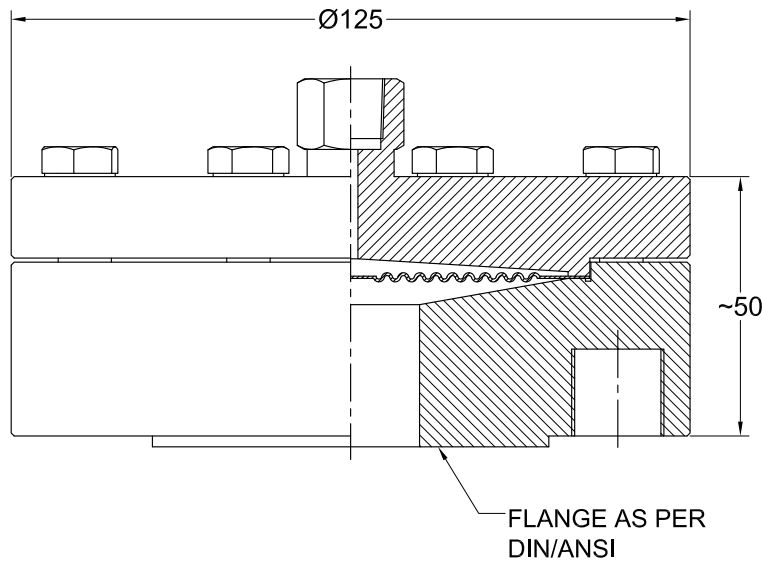
Applications

Chemical and petrochemical industry
 Machine and apparatus construction
 Offshore installations
 Pulp and paper industry
 Waste water treatment



Technical specification	DF25	
Process connection size, flanged ASME B16.5 EN 1092-1	ANSI DIN	1", 1 1/2", 2", 3" DN25, DN40, DN50, DN80, others on request
Rating	ANSI DIN	150 lbs, 300 lbs, 600 lbs, 900 lbs, 1500 lbs PN10, PN16, PN25, PN40, PN64, PN100, others on request
Construction Fill port Flushing connection Flushing connection size		Bolted top and bottom housing, removable for easy maintenance At the side with stainless steel ball and set screw Optional flushing 1/4" 1/2" NPT female
Maximum pressure Metal bottom housing [lbs / bar]		1500/100
Measuring principle		Diaphragm welded to top housing
Instrument connections [female]		3/8" BSP, 1/2" NPT, others on request
Material (wetted parts) Bottom housing Diaphragm (metal type) Diaphragm (other types)		Stainless steel 316L, 316L with PTFE protection Stainless steel 316L Stainless steel 316L with PFA protection
Material (non wetted parts) Top housing Bolts and nuts		Stainless steel 304, 316L Stainless steel 300 series
Accuracy		Additional 0,5 % to the specified tolerance of the mounted instrument
Filling liquids (temperature range)		Glycerin (0/400 °F, -18/204 °C), Silicone (-50/400 °F, -45/205 °C), Halocarbon (-50/320 °F, -45/160 °C), Syltherm 800 (-40/750 °F, -40/400 °C), Food grade silicone (5/570 °F, -15/300 °C), Others on request, also depending on selected material and configuration.
Mounting		Direct or with capillary
Accessories, options		NACE, Diff. pressure gauges, Diff. pressure switches, transducers, capillaries

General dimensions in mm



Order information

Process connection	Type	Diaphragm	Bottom housing material	Instrument connection	Rating	Flange facing	Filling fluid	Length of Capillary
ANSI Flanged (10) 1" (15) 1 1/2" (20) 2" (30) 3" DIN Flanged (DN25) (DN40) (DN50) (DN80)	DF25	(S) SS316L	(S) SS316L	(14T) 3/8" BSP(F)	ANSI (150) 150 lbs (300) 300 lbs (600) 600 lbs (900) 900 lbs (1500) 1500 lbs DIN (PN10) (PN16) (PN25) (PN40) (PN64) (PN100) others on request	(FF) Flat face ²⁾ (RF) Raised face ²⁾ (RTJ) Ring joint type ²⁾	(CG) Glycerin (direct mounted, -18/204 °C) (CK) Silicone (direct mounted or with capillary, -45/205 °C) (CF) Halocarbon (direct mounted or with capillary, -45/160 °C) (HA) Syltherm 800 (direct mounted or with capillary, -40/400 °C) (CZ) Food grade silicone (direct mounted or with capillary, -15/300 °C)	(CA) Stainless steel armored capillary ³⁾ (CP) Stainless steel armored capillary with PVC protection ³⁾
		(SJ) SS316L PFA coated ¹⁾	(SP) SS316L PTFE lined ¹⁾	(04T) 1/2" NPT(F)				Options (NH) SS wired tag (OF) Oil free (only filled with halocarbon) (YT) SS316L top housing (SR4) Spacer ring with 1/2" NPT flushing (SR2) Spacer ring with 1/4" NPT flushing Certificate (CD3) 3.1 Material Certi.

1) Restricted to maximum temperature 200 °C, not available with option SR2, SR4 2) The DIN-flange facing depends on nominal size and nominal pressure
 3) Max length 30m, specify length in meter EG. CP1.0 = CP with 1m

How to order

Process connection	Type	Diaphragm material	Bottom housing material	Instrument connection	Rating	Flange facing	Filling fluid	Length of Capillary	Options	Certificate
15	DF25	S	S	14T	300	RF	CK	CA1.0	NH	CD3

Precision Mass Products Pvt. Ltd.

Plot No.: 2306, G.I.D.C. Chhatral, Ta: Kalol, Dist.: Gandhinagar, Chhatral -382729, Gujarat, India.

Telephone: +91-2764 233681/82/83

Email: sales@precisionmass.com

Fax: +91-2764-233440

www.precisionmass.com

- North Zone : sales.delhi@precisionmass.com
- East zone : sales.kolkata@precisionmass.com
- West zone : sales.mumbai@precisionmass.com
- South zone : sales.chennai@precisionmass.com