

# Diaphragm seals for Pulp and Paper

## Model DF24

### Features

- Flush diaphragm design prevents clogging
- Easy to clean and maintain
- Interchangeable components
- Variety of wetted parts materials
- Rotating Ring

### Pressure rating

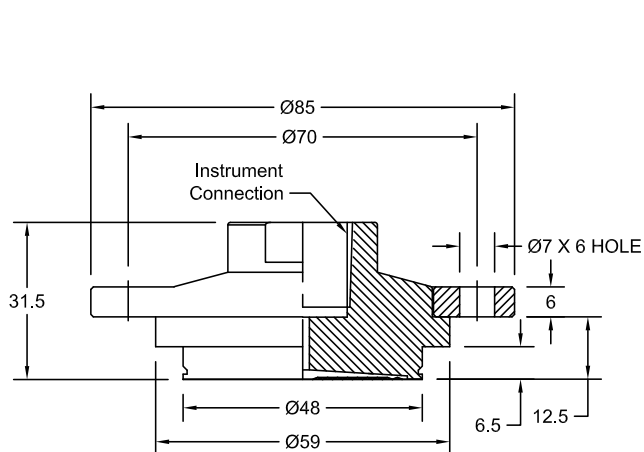
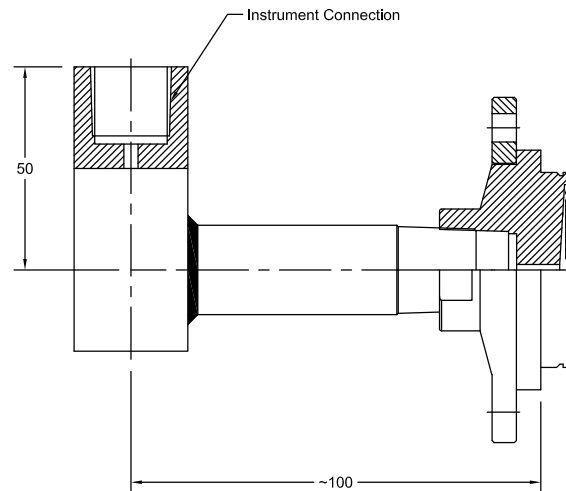
15 psi up to 600 psi  
 1 kg/cm<sup>2</sup> up to 40 bar & kg/cm<sup>2</sup>  
 100 kPa up to 4000 kPa



### Applications

Pulp manufacturing  
 High viscosity fluids  
 Waste Process  
 Paper industry  
 Paint industry

Technical specification	DF24
Process connection size, flanged	Special purpose for interchangeability in industry
Construction Fill port	Flush diaphragm housing with rotating flange for easy alignment At the side with stainless steel ball and set screw
Maximum pressure Metal bottom housing [psi / bar]	600/40
Measuring principle	Welded Diaphragm to Top housing
Instrument connections [female]	3/8" BSP, 1/2" NPT, others on request
Material (wetted parts) Bottom housing Diaphragm	Stainless steel 316L, SS316L with PFA coating, Hastelloy C276 Stainless steel 316L, SS316L with PFA coating, Hastelloy C276
Material (non-wetted parts) Flange	Stainless steel 304, optional 316L
Accuracy	Additional 0,5 % to the specified tolerance of the mounted instrument
Filling liquids (temperature range)	Glycerin (0/400 °F, -18/204 °C), Silicone (-50/400 °F, -45/205 °C), Halocarbon (-50/320 °F, -45/160 °C), Syltherm 800 (-40/750 °F, -40/400 °C), Vegetable oil (32/248 °F, 0/120 °C), Food grade silicone (5/570 °F, -15/300 °C), Others on request, also depending on selected material and configuration.
Mounting	Direct, 90 Elbow, Direct with capillary
Accessories, options	NACE, pressure gauges, pressure switches, transducers, capillaries

**General dimensions in mm**

**Direct**

**90° Elbow**
**Order information**

Mounting	Type	Diaphragm	Bottom housing material	Instrument connection	Filling fluid	Length of Capillary
(D) Direct	DF24	(S) SS316L	(S) SS316L	(14T) 3/8" BSP (F)	(CG) Glycerin (direct mounted, -18/204 °C)	(CA) Stainless steel armored capillary <sup>2)</sup>
(E) 90° Elbow		(SJ) SS316L PFA coated <sup>1)</sup>	(SJ) SS316L PFA coated <sup>1)</sup>	(04T) 1/2" NPT (F)		
		(H) Hastelloy C276	(H) Hastelloy C276		(CK) Silicone (direct mounted or with capillary, -45/205 °C)	(CP) Stainless steel armored capillary with PVC protection <sup>2)</sup>
					(CF) Halocarbon (direct mounted or with capillary, -45/160 °C)	<b>Options</b>
					(HA) Syltherm 800 (direct mounted or with capillary, -40/400 °C)	(NH) SS wired tag
					(GZ) Vegetable oil (direct mounted or with capillary, 0/120 °C)	(OF) Oil free (only filled with halocarbon)
					(CZ) Food grade silicone (direct mounted or with capillary, -15/300 °C)	(FLS) Flange material SS316L
					others on request	<b>Certificate</b>
						(CD3) 3.1 Material Certi.

1) Restricted to maximum temperature 200 °C 2) Max length 30m, specify length in meter EG. CP1.0 = CP with 1m

**How to order**

Mounting	Type	Diaphragm	Bottom housing material	Instrument connection	Filling fluid	Length of Capillary	Options	Certificate
D	DF24	S	S	14T	CZ	CA1.0	NH	CD3

**Precision Mass Products Pvt. Ltd.**

Plot No.: 2306, G.I.D.C. Chhatral, Ta: Kalol, Dist.: Gandhinagar, Chhatral -382729, Gujarat, India.

Telephone: +91-2764 233681/82/83

Email: sales@precisionmass.com

Fax: +91-2764-233440

www.precisionmass.com

- North Zone : sales.delhi@precisionmass.com
- East zone : sales.kolkata@precisionmass.com
- West zone : sales.mumbai@precisionmass.com
- South zone : sales.chennai@precisionmass.com