

Capsule type pressure gauge

Model CPS

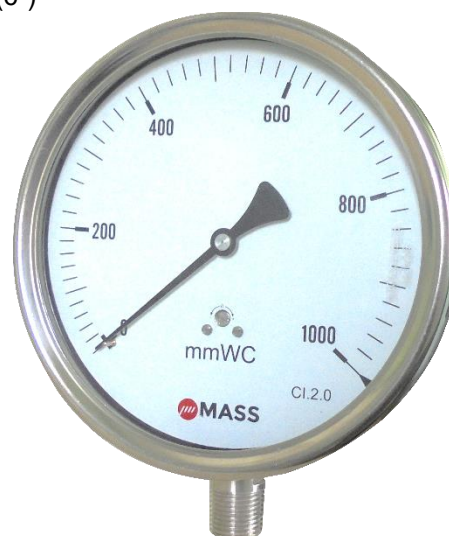
Nominal size: 63 mm (2.5"), 100 mm (4"), 115 mm (4.5"), 150 mm (6")
 ASME B40.100 / EN 837-3 / IS-3624
 Accuracy: 2.0%, optional 1.6%, 1.0%

Features

- Low pressure measurement
- Stainless steel construction
- Suitable for gases application
- Protection IP66/ IP68
- Suitable for corrosive environments
- Suitable aggressive application
- Standard zero adjustment

Ranges



0 ... 60 mmWC up to 0 ... 6000 mmWC
 0 ... 6 mbar up to 0 ... 600 mbar
 0 ... 0.6 kPa up to 0 ... 60 kPa
 in gauge, vacuum and compound



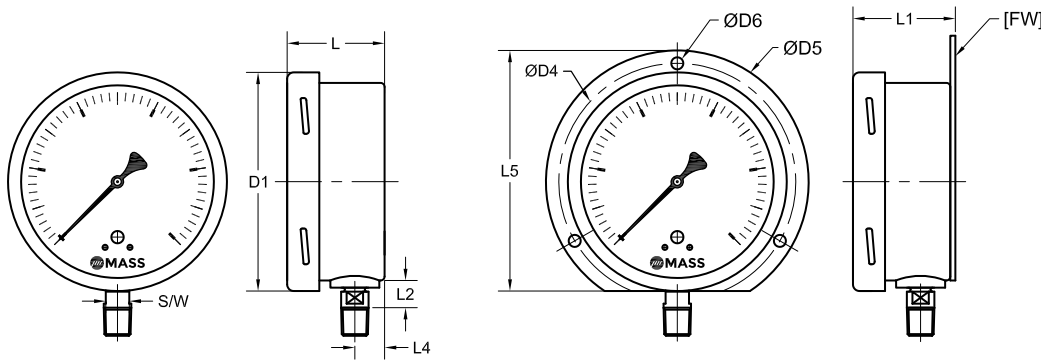
Applications

Chemical & petrochemical industries, refineries
 Air conditioning
 Machine and apparatus construction



Technical specification	CPS			
	63	100	115	150
Dial size [mm]	63	100	115	150
Construction	Open front cylindrical case, with blow out disc at the back and vent plug on top			
Zero adjustment	Standard			
Measuring principle	Capsule			
Range [mbar]	6 10 16 25 40 60	100 160 250 400 600		
Overpressure limit	-6/0 -10/0 -16/0 -25/0 -40/0 -60/0 -100/0 -160/0 -250/0 -400/0 -600/0			
Pressure type	130 % F.S., short time. Gauge, vacuum and compound			
Process connection	1/4" 3/8" 1/2" BSP / NPT (M) , M20x1.5 (M) Others on request			
Connection location	Lower, Centre back			
Material				
Pressure connection	Stainless steel 316L			
Capsule	Stainless steel 316L			
Case/bayonet ring	Stainless steel 304, optional 316L			
Window	Instrument glass, optional laminated safety glass or acrylic glass			
Dial	Aluminum, black markings on white background			
Pointer	Aluminum, black			
Movement	Stainless steel 304, optional 316L			
Accuracy	2.0 % F.S., Optional 1.6%, 1.0%			
Permissible				
Ambient temperature	-25 ... 60 °C (-13 ... 140 °F)			
Medium temperature	Max. 100 °C (212 °F)			
Storage temperature	-40 ... 65 °C (-40 ... 150 °F)			
Effect	Max. 0.5 % / 10 K			
Protection according EN 60 529/IEC 529	IP66/ IP68			
Optional Approval	Conformity according to 2014/34/EU for mechanical equipment in potential hazardous areas  II 2G Ex h IIC T6..T1 Gb X  II 2D Ex h IIIC T85..T450°C Db X			
Mounting	Standard stem, optional flush or surface, others on request			
Accessories, options	Valves, Pressure limiters, Cooling towers, etc			

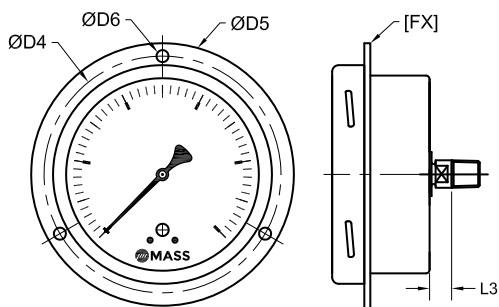
General dimensions in mm



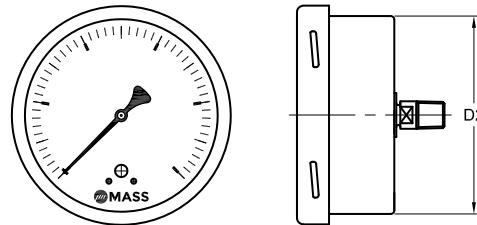
Lower Connection Direct Mounting

Lower Connection Surface Mounting

DIAL SIZE	63	100	115	150
ØD1	68.6	109	127	166
ØD2	61.6	98.5	114.5	152
ØD4	75	118	136	168
ØD5	85	132	152	186
ØD6	3.6	6	6	6
L	47	49	49	49
L1	51	51.5	51.5	51.5
L2	13	16	16	16
L3	13	16	16	16
L4	10.8	14.8	14.8	15.5
L5	78	122	140	176
SW	11	17	17	17



Back Connection Front Panel Mounting



Back Connection Direct Mounting

Order information

Size	System material	Execution	Process connection	Connection orientation	Range	Engineering units	Case material	Options	
(63) 63 mm	(S) Socket and Capsule 316L	(L) IP66/68	(04) 1/2" NPT (M) ¹⁾	(L) Lower	-6/ 0 ²⁾	(MBAR)	(=) Standard	(NH) SS wired tag	
(100) 100 mm			(03) 3/8" NPT (M) ¹⁾	(C) Centre back	-10/ 0 ²⁾			(YW) SS316L Case	(CS) Dual scale
(115) 115 mm			(02) 1/4" NPT (M)		-25/ 0				(SD) Special Dial
(150) 150 mm			(15) 1/2" BSP (M) ¹⁾		-40/ 0				(PD) Acrylic glass ⁶⁾
			(14) 3/8" BSP (M) ¹⁾		-60/ 0				(SG) Safety glass
	(13) 1/4" BSP (M)		-100/ 0	(FW) Back flange					
			(16) M20x1.5 (M) ¹⁾		-160/ 0			(FX) Front flange ³⁾	
					-250/ 0	Equivalent ranges in mmWC, kPa, inHg and others units available		(AL) Calibration 1.6%	
					-400/ 0			(AN) Calibration 1% ⁴⁾	
					-600/ 0			(AT) ATEX listed ¹⁾⁵⁾	
					0/ 6 ²⁾			Certificate	
					0/ 10 ²⁾			(CD5) NACE Certificate	

1) Not for Size 63 mm 2) Only for size 150 mm 3) only center back connection 4) available for limited ranges and options, consult engineering
5) Not admissible with glass option (PD) 6) Not available with Ex-proof

How to order

Size	Type	System material	Execution	Process connection	Connection orientation	Range	Engineering unit	Case material	Options	Certificate
150	CPS	S	L	04	L	0/60	MBAR	=	NH	CD5

Precision Mass Products Pvt. Ltd.

Plot No.: 2306, G.I.D.C. Chhatral, Ta: Kalol, Dist.: Gandhinagar, Chhatral -382729, Gujarat, India.

Telephone: +91-2764 233681/82/83

Email: sales@precisionmass.com

Fax: +91-2764-233440

www.precisionmass.com

- North Zone : sales.delhi@precisionmass.com
- East zone : sales.kolkata@precisionmass.com
- West zone : sales.mumbai@precisionmass.com
- South zone : sales.chennai@precisionmass.com