

All stainless steel bimetal thermometer

Model BMT

Nominal size 63 mm, 100 mm, 115 mm or 150 mm
Accuracy: Class 1

Features

- Rugged stainless steel construction
- Fast response
- Protection IP65, IP66, IP67 and IP68
- External zero adjustment
- Dry or liquid filled

Ranges

-50 ... 50 °C up to 0 ... 600 °C
-80 ... 120 °F up to 30 ... 1100 °F

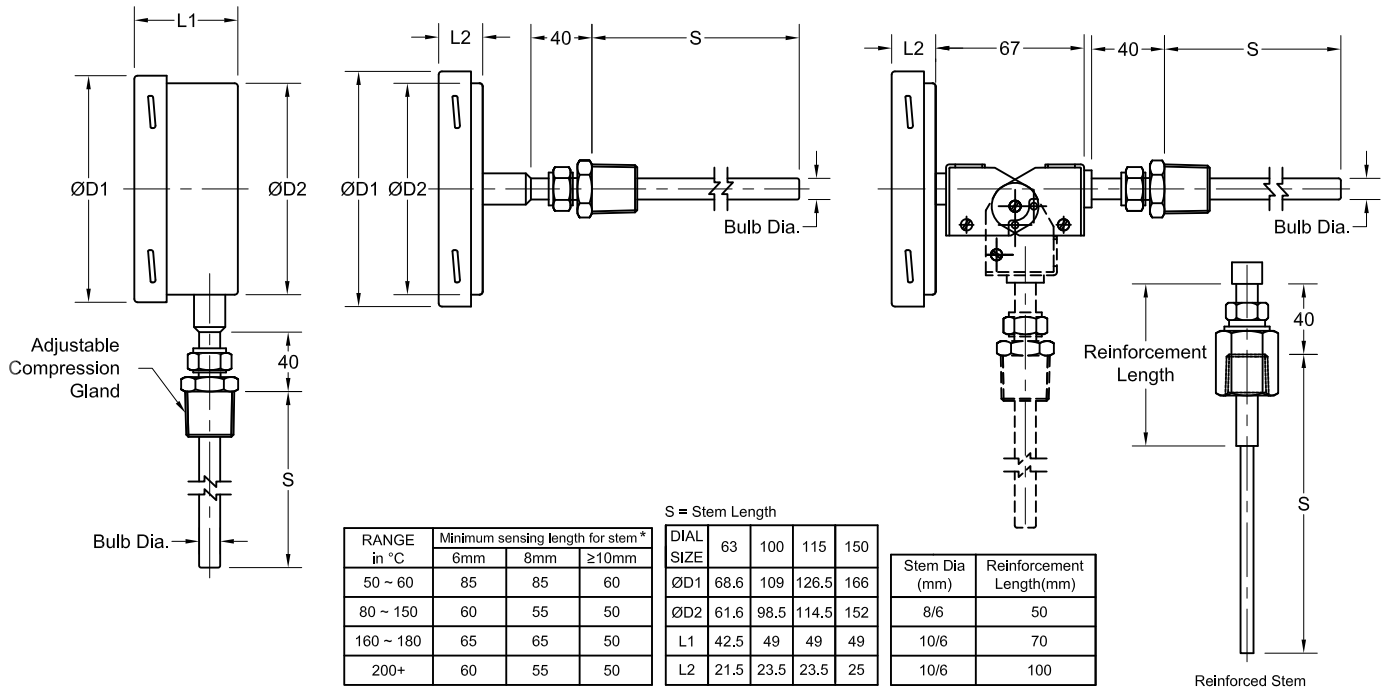
Applications

Chemical and petrochemical industry
Machine and apparatus construction
Food and beverage industry
Pulp and paper industry



Technical specification	BMT			
	63mm	100 mm	115 mm	150 mm
Dial size	63mm	100 mm	115 mm	150 mm
Construction	Cylindrical case with bayonet ring			
Measuring principle	Bimetallic coil			
Range in °C	0/50 0/60 0/80 0/100 0/120 0/150 0/160 0/200 0/250 0/300 0/400 0/450 0/500 0/550 0/600 -10/50 -10/110 -20/40 -20/60 -20/180 -30/50 -30/70 -40/40 -40/60 -40/160 -50/50 -50/100 -50/150			
Temperature limits	Ranges in °F and dual scales on request			
Max. process over temperature	Max. 130 % F.S. Subjected to Max. 625°C Over temperature			
Stem	Max. 130 % F.S. Subjected to Max. 625°C Over temperature			
Diameter	6 mm, 8 mm, 10 mm, 12 mm, others on request			
Length	63 ... 1000 mm, minimum length depends on range, (refer chart)			
Process connection	Plain 1/2" 3/4" 1" BSP / NPT (M) fixed or adjustable			
Connection location	Back / Every angle (rotatable)	Lower / Back / Every angle (rotatable)		
Material	Connection: Stainless steel 316L Stem: Stainless steel 316L Case/ring: Stainless steel 304, optional 316L Window: Instrument glass, optional laminated safety glass Dial: Aluminum, black markings on white background Pointer: Aluminum, black			
Accuracy	Class 1 as per EN 13190			
Permissible	Ambient temperature: -25 ... 80 °C Storage temperature: -40 ... 60 °C			
Protection	IP65 / IP66 / IP67 / IP68			
Filling liquids	Silicone, not for lower connection, maximum range up to 300 °C			
Accessories, options	Thermowells, dual scale			

General dimensions in mm



* For range above 250 C, minimum stem length of 300mm is recommended.

Order information

Size	Stem diameter	Filling	Process connection		Connection orientation	Stem length	Range	Engineering unit	Options
(63) 63mm	(06) 6 mm	(=) Standard (no filling)	(40) Plain	(75) Adjustable union 1 BSP (M)	(L) Lower ²⁾	63 to 1000 mm (for minimum length refer above table)	0 / 50	°C	(NH) SS wired tag
	(08) 8 mm		(60) Fixed 1/2 NPT (M)	(R) Back	0 / 60				
	(100) 100 mm	(L) Liquid filled with silicone max. up to 300 °C (not for lower connection, ambient temperature maximum 65 °C)	(61) Fixed 1/2 BSP (M)	(76) Adjustable union 1/2 NPT (F)	(E) Every angle		0 / 80		
	(115) 115 mm		(70) Adjustable union 1/2 NPT (M)	(77) Adjustable union 1/2 BSP (F)			0 / 100		
(150) 150mm	Reinforced Stem		(71) Adjustable union 1/2 BSP (M)	(90) Adjustable union M20X1.5		0 / 120		(SD) Special Dial	
	(8/6) 8/6 mm		(72) Adjustable union 3/4 NPT (M)	(110) Adjustable union 1/4 NPT (M)		0 / 150			
	(10/6) 10/6 mm		(73) Adjustable union 3/4 BSP (M)	(112) Adjustable union 3/8 BSP (M)		0 / 160			
	(10/8) 10/8 mm		(74) Adjustable union 1 NPT (M)	(113) Adjustable union 1/4 BSP (M)		0 / 200			
						-10/ 50		(CS) Dual scale	
						-10/ 110		(SG) Safety glass	
						-20/ 40		(YW) SS316L Case	
						-20/ 60		(04N100S) 100 mm Nipple 1/2" NPT (MxM) SS316	
						-20/ 180		(EZ) External zero adjustment ¹⁾	
						-30/ 50		Certificate	
						-30/ 70		(CD3) 3.1 Material Certi.	
						-40/ 40			
						-40/ 60			
						-40/ 160			
						-50/ 50			
						-50/ 100			
						-50/ 150			

1) For size 100mm, 115 mm and 150mm only, and not for connection orientation Lower. 2) Not for size 63mm

How to order

Size	Type	Stem diameter	Filling	Process connection	Connection orientation	Stem length	Range	Engineering Unit	Option	Certificate
100	BMT	12	=	70	E	150	0/200	C	NH	CD3

Precision Mass Products Pvt. Ltd.

Plot No.: 2306, G.I.D.C. Chhatral, Ta: Kalol, Dist.: Gandhinagar, Chhatral -382729, Gujarat, India.

Telephone: +91-2764 233681/82/83

Email: sales@precisionmass.com

Fax: +91-2764-233440

www.precisionmass.com

- North Zone : sales.delhi@precisionmass.com
- East zone : sales.kolkata@precisionmass.com
- West zone : sales.mumbai@precisionmass.com
- South zone : sales.chennai@precisionmass.com